



Te Araroa

The Long Pathway

History

1975 – New Zealand Walkways Commission is formed - one goal was to create a New Zealand Long Scenic Walkway

1987 - Walkways NZ folds into DOC without a trail being achieved



1994 – The Trust is established with a goal of completing the Millennium Trail by 2000

1997 – The North Island is mapped


1998 – Geoff Chapple walks North Island



History



[Home](#) [About Us](#) [News](#) [The Trail](#) [Trail Stories](#) [Support Te Araroa](#) [Recommendations](#) [Contact Us](#)



GUIDEBOOK NOW ON SALE AT BOOKSTORES

- Te Araroa - The Long Pathway


Te Araroa is a 3000-km trail stretching from Cape Reinga in the North of New Zealand to Bluff in the South.

The trail opened December 3rd, 2011.

Down the coastline, through the forest, across farmland, over volcanoes and mountain passes, along river valleys, and on green pathways through seven cities.

It's one of the longest walking routes in the world. Hundreds of volunteers worked over ten years to put the trail in

"Because it wasn't there"



DONATE NOW

Donate today to support Te Araroa

NEWSLETTER SIGNUP

Receive updates on news and events

Join our **GOOGLE GROUP**

Follow us on **FACEBOOK**

News

Takahue route advisory - 16 January 2012
Closed two weeks for logging
[more >](#)

Breast Hill's upgrade - 04 January 2012
The Tin Hut makeover
[more >](#)

TA Opening (1) - 09 December 2011
They prepare
[more >](#)

THE TRAIL

Track information and map downloads

TRAIL STORIES

Documentation from Te Araroa walkers



Te Araroa Trust

Trustees

- John Birch – Chairman
- Jan Sedgewick
- Henry Marchant
- Elena Kim
- John Stroud
- Cam Hayes
- Maureen McCloy
- Paul Holloway



Executive Director – Matt Claridge

Trail Manager – Dan Radford

Marketing and Comms Manager – Rose Scully

Partnership Manager – Justin Tamihana/Fiona Naismith (Maternity Leave)

Fundraising Manager – Gemma Hoskins/Fiona Naismith (Maternity Leave)

Trail Operations Coordinator – ?????



Regional Trusts

- Northland
- Auckland
- Waikato (on hold)
- Whanganui (casual...)
- Manawatu
- Wellington
- Top of the South
- Southland (on hold)



3000+ Kilometres of



COASTLINES



FARMS



VOLACANOS



RIVERS



CITIES



MOUNTAINS



ESTABLISHED 1871

·OTAUTAU·

FAULTY TOWERS
* * *

·HOTEL·

PUBS

Beachside
Liquor Store

Come on into
our Bottlestore
& get your
free gift with
your purchase
today

TAB

Otautau
Hotels

Otautau
Hotels

Dine in
try our
Oyster
Combo
Baked oysters
& fries

Beachside
Liquor Store

A Variety
of Homemade
Soups
available all day
Everyday



- The Route – Notes & Maps
- Maintenance
- Development



Trail Manager

Northern Start
Southern End
Distance
Time
Tramping Standard
Description (North to South)

Orewa Beach

Jetty, ramp & Weiti Boating Club at end of Wade River Rd, Whangaparaoa


12 kms

3 hours

Mixed grade

Best at low tide:
From the southern end of Orewa Beach, follow the path to the bridge over the Orewa

Map (indicative only)



A map of a coastal area. A red line starts at point A (marked with a red circle) near Red Beach and ends at point B (marked with a red circle) near Stillwater. The line follows the coastline, passing through or near Red Beach, Ardale, and Big Mar. Other locations labeled include Beach, Inewa, and Little. A road labeled 1A is shown near Red Beach.

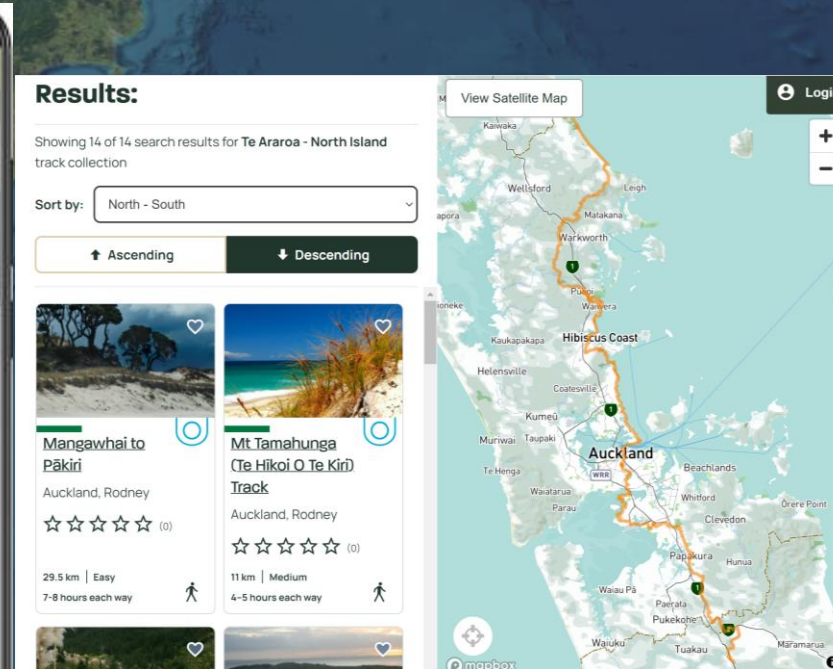
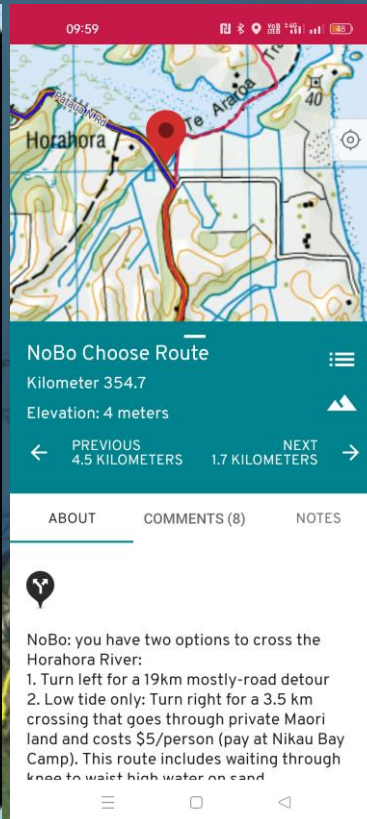
From the southern end of Orewa Beach, follow the path to the bridge over the Orewa River & east into the Amorino Reserve on the southern banks. Follow the signs for the Rodney District Council's Coastal Walkway – Rosario Cres; walkway through to Walton St; Red Beach; around the rocks on an outgoing tide to steps leading up towards Glenelg Rd; turn SE and follow the grassy cliff top walkway up and down for 500m to a pedestrian accessway leading through to Duncansby Rd. (Alternatively, if the tide is well out, you can keep on around the coast, minding the slippery rocks, to a concrete ramp which will also lead you directly up to this walkway).

You'll eventually come to a jetty (the 2nd one) & launching ramp by the Weiti Boating Club (Tel: 424-5400) on the Weiti River. Here you may be able to get a lift across the Weiti River to the Stillwater side with local boaties.

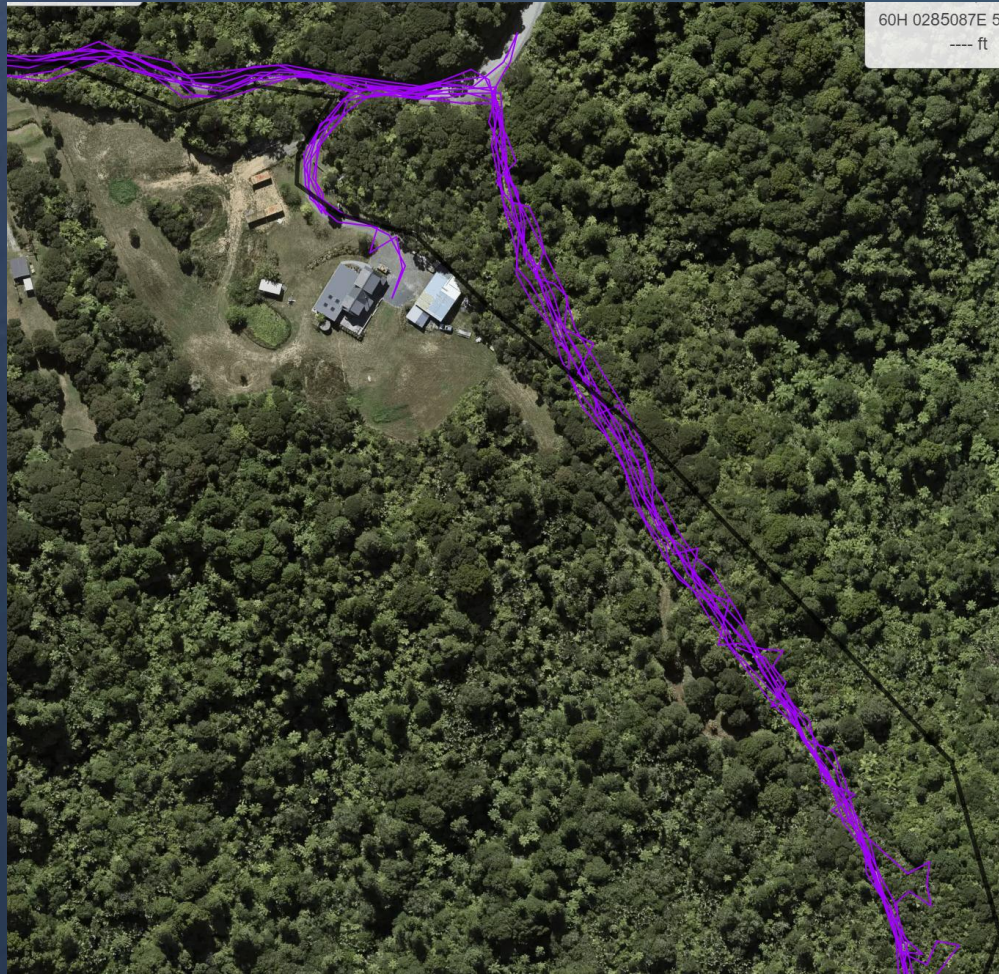
Or try the Stillwater Boating Club (Tel: 09 428-2185) on the other side of the Weiti River.

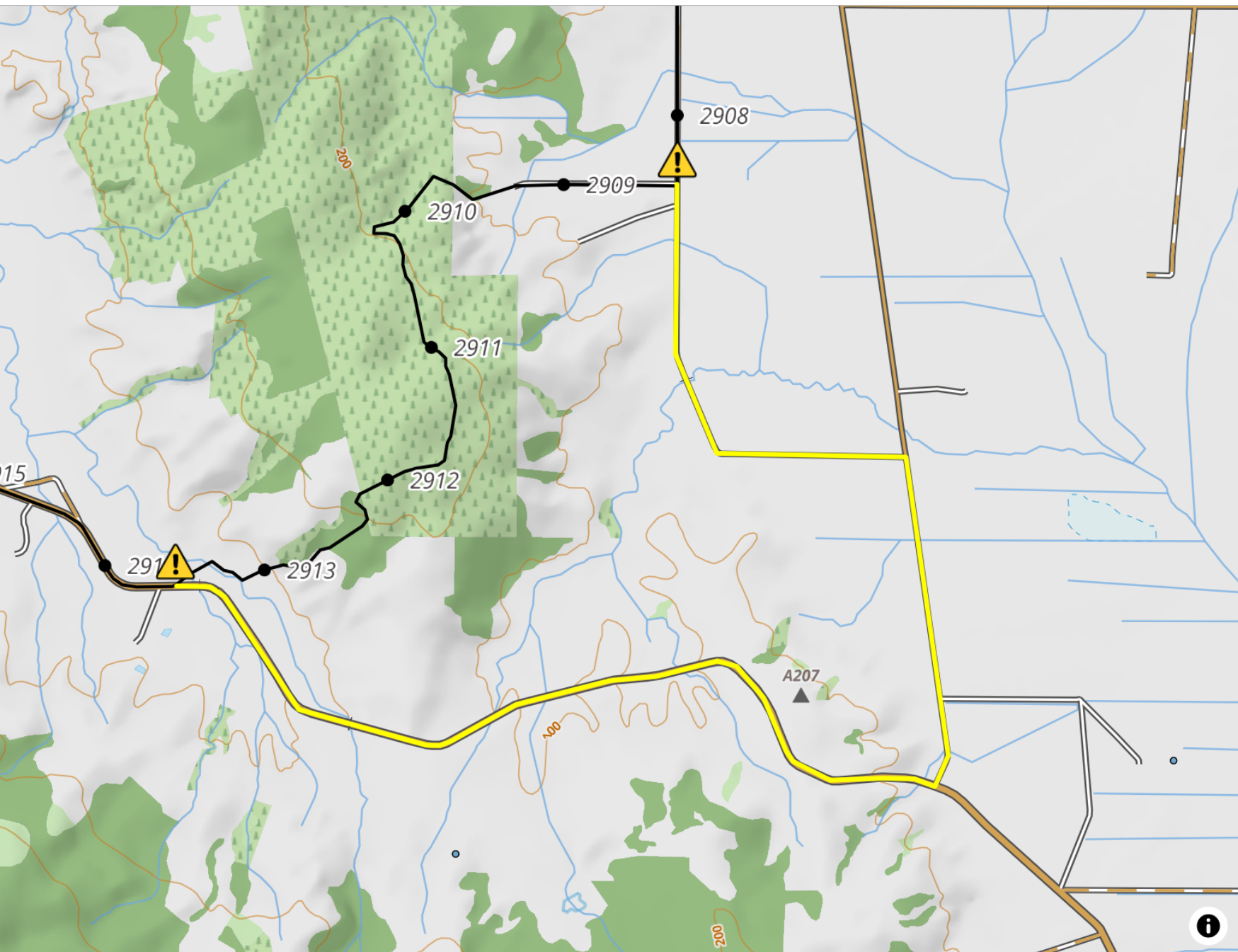


Now



FarOut





Closure



Island Bush Track - Forestry Closure km 2,909

Start: March 02, 2025

End: September 29, 2025

Location

From: 2908.5 km

To: 2913.5 km

Te Araroa route through Island Bush Block is closed to walkers due to forestry operations from Monday 3 March 2025.

Rerouting for southbounders is via road verge from the start of Hewitt Road heading south on Upper Scotts Gap Road, Symon Road, right onto Lower Scotts Gap Road, then right again onto Otautau-Tuatapere road to Merrivale. Northbounders are the reverse of this from the stile on Otautau-Tuatapere road.

Applicable: 2025-03-03, 2909~2914



Maintenance

- For the first decade, there was no structured maintenance programme
- TAT considers itself directly responsible for 355km of track
- Track maintenance is funded solely by walker donations
- Funds for maintenance allocated to Regional Trusts, partner organisations and Nationally managed contractors





Stuff that's not directly my job but this audience may find more interesting

- Who Are They

- Registration Evolution

- Walker Education and Culture



In a Village of 100...

- 79 are walking Southbound (SOBO)
- 21 are walking Northbound (NOBO) – 26 walked NOBO this season
- 47 are “thru hiking” (92% SOBO)
- 5 are hiking North Island only
- 20 are hiking South Island only
 - More than half of South Island only are NOBO walkers (registration data says this split is 45:55 the other way).
- 27 are section hiking. More than half of the section hikers are Kiwis.
- 56 are hiking alone
- 11 are in couple
- 15 are with their family/whanau
- 10 are with their friends



In a Village of 100...

- 35 – New Zealand
 - 31 European
 - 3 Māori/Pasifika
 - 1 Asian
 - 1 Other
- 42 - Europe
- 13 – North America
- 9 – Australia
- 1 – Asia
- 1 – Africa/South America combined



REGISTRATIONS



Culture

- **The Trust - Whakahou Strategy**
 - Give more, take less
 - Te Araroa is good for people, place, environment, economy
- **Increase registrations to increase influence and develop community**
 - Increase pre-walk education
 - Become the source of truth – influential and trusted
 - Shape culture



Better Together

- Partnership/Collaboration
- Share Learnings
- Strength in numbers
- Leverage

